



Rose  
Lily®



# ROSELILY

## INTRODUCTION

**Roselily is an unique collection that consists out of pollen free Oriental lilies with at least a double amount of petals. These special features make this collection a true innovation in the "World of lilies". We are very proud to present the current available assortment in this leaflet.**

The name "Roselily" came into existence in 2010, because as their blooms open, what they most resemble is a rose. No

wonder this series was named after two iconic flowers: the rose and the lily. Similar to roses, Roselily can also be sold in an open stage. Additionally, the individual flowers last approximately four days longer than most Oriental lilies, which translates into more longevity at retail stores with a longer vase life.

The breeding of future Roselily varieties continues in full progress and development, we test all the varieties in our Roselily facility in the Netherlands. All the test results are taken into consideration, as well as the test results and

feedback from our valuable customers around the world. This enables us to select a top assortment for you.

To ensure you get the best information, please contact your sales representative to provide you with the best possible cultivation information and advice. For an optimal presentation we can also arrange special Roselily sleeves and elegant Roselily stickers for your marketing endeavours.

**JOIN THE  
"ROSELILY"  
JOURNEY!**



ROSELILY AISHA®



ROSELILY ANGELA®



ROSELILY COROLLA®



ROSELILY DEJIMA®



ROSELILY LEONA®



ROSELILY MAXIMA®



ROSELILY MONICA®



ROSELILY RAMONA®



ANOUSKA®





ROSELILY EDITHA®



ROSELILY KENDRA®



ROSELILY CIARA®



ROSELILY CLARISSA®



ROSELILY ISABELLA®



ROSELILY NATALIA®



ROSELILY PATRICIA®



ROSELILY THALISSA®



ROSELILY DALINDA®





ROSELILY DORIA®



ROSELILY ELENA®



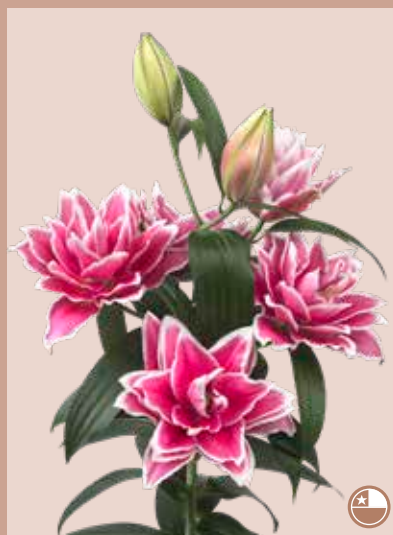
ROSELILY JUANA®



ROSELILY JULIA®



ROSELILY LORENA®



ROSELILY SAMANTHA®



ROSELILY THALITA®



ROSELILY VIOLA®

Soon available  
from Chile:

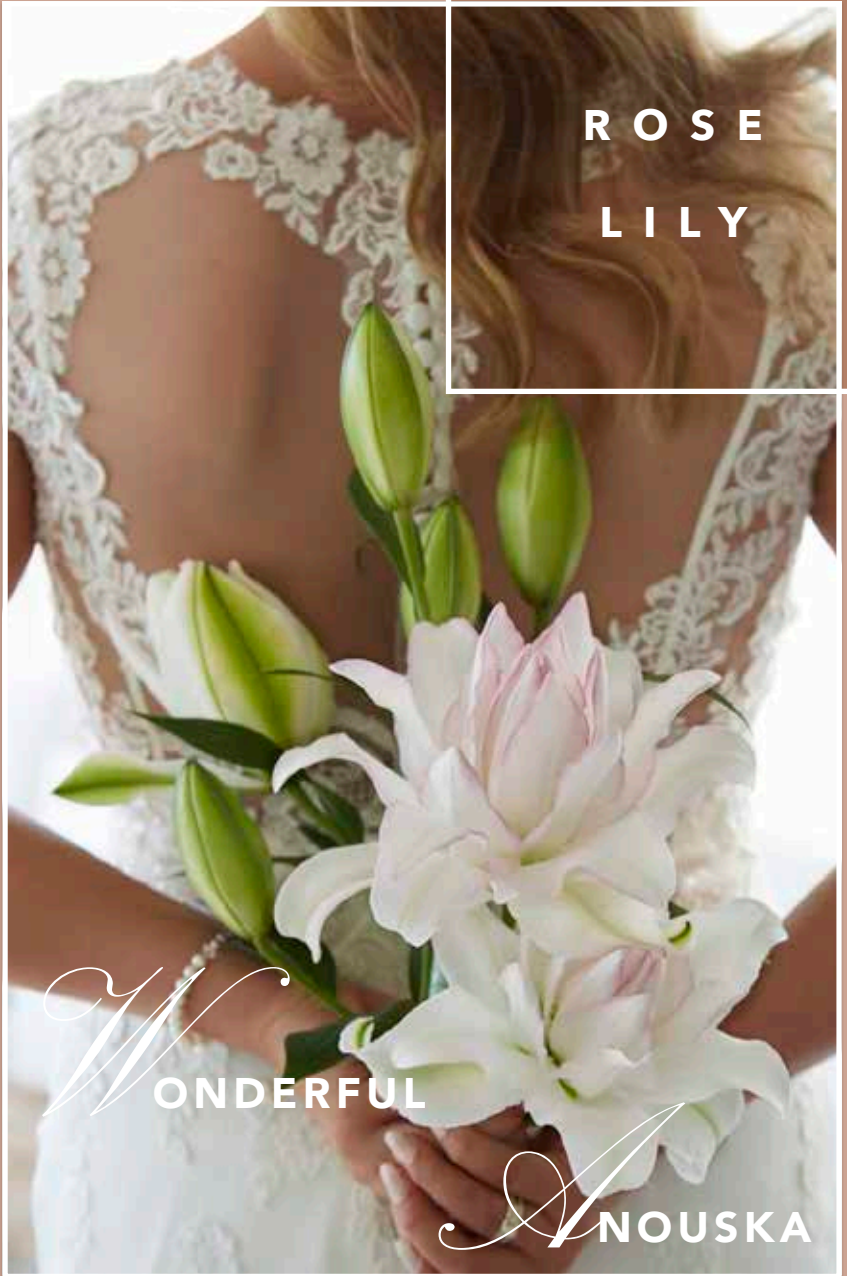
ROSELILY AÍSHA®

ROSELILY ISABELLA®

ROSELILY SAMANTHA®

ROSELILY VIOLA®





ROSE  
LILY



A  
BEAUTIFUL  
ROSELILY  
COLLECTION

W  
ONDERFUL  
ANOUSKA



Rose  
Lily



# ROSELILY INFORMATION

Variety	Colour	Crop timing in days	Plant height in cm	Number of buds per bulb size			
				12-14	14-16	16-18	18-20
ROSELILY AĪSHA®	White/green	105	90	1 - 3	2 - 3	3 - 4	4 - 5
ROSELILY ANGELA®	White	110	105	1 - 3	2 - 4	3 - 5	4 - 6
ROSELILY COROLLA®	White	105	110	1 - 3	2 - 4	3 - 5	4 - 6
ROSELILY DEJIMA®	White	105	95	1 - 3	2 - 4	3 - 5	4 - 6
ROSELILY LEONA®	White	120	100	2 - 4	3 - 4	4 - 5	5 - 6
ROSELILY MAXIMA®	White	105	105	1 - 3	2 - 4	3 - 5	4 - 6
ROSELILY MONICA®	White	110	120	2 - 3	3 - 4	4 - 6	5 - 7
ROSELILY RAMONA®	White	95	110	1 - 3	2 - 4	4 - 5	5 - 7
ANOUSKA®	White/pink edge	105	110	2 - 3	3 - 5	4 - 6	5 - 7
ROSELILY EDITHA®	Light pink	105	90	1 - 3	2 - 4	3 - 5	4 - 6
ROSELILY KENDRA®	Light pink	105	105	2 - 4	3 - 5	5 - 7	6 - 8
ROSELILY CIARA®	Pink	95	110	2 - 4	3 - 5	4 - 6	5 - 7
ROSELILY CLARISSA®	Pink	110	110	3 - 5	4 - 7	6 - 8	7 - 9
ROSELILY ISABELLA®	Pink	110	120	3 - 4	4 - 6	5 - 7	6 - 8
ROSELILY NATALIA®	Pink	90	85	1 - 3	2 - 4	3 - 5	4 - 6
ROSELILY PATRICIA®	Pink	100	110	2 - 3	3 - 4	3 - 5	4 - 6
ROSELILY THALISSA®	Pink	105	100	2 - 3	3 - 5	4 - 6	5 - 7
ROSELILY DALINDA®	Dark pink	110	95	2 - 4	3 - 5	5 - 7	6 - 8
ROSELILY DORIA®	Dark pink	115	110	2 - 4	4 - 6	5 - 7	6 - 8
ROSELILY ELENA®	Dark pink	95	100	2 - 4	3 - 6	5 - 7	6 - 8
ROSELILY JUANA®	Dark pink	100	105	2 - 3	3 - 4	4 - 6	5 - 7
ROSELILY JULIA®	Dark pink	90	105	2 - 4	3 - 5	4 - 6	5 - 7
ROSELILY LORENA®	Dark pink/white edge	120	105	3 - 4	4 - 5	5 - 7	5 - 8
ROSELILY SAMANTHA®	Dark pink/white edge	115	85	2 - 4	3 - 6	5 - 7	6 - 8
ROSELILY THALITA®	Dark pink	115	120	2 - 4	3 - 6	5 - 7	6 - 9
ROSELILY VIOLA®	Dark pink	115	110	2 - 4	3 - 6	4 - 7	6 - 9

## CULTIVATION AND CARE ADVISE

- Plant more widely than normal Orientals, in clean, fresh soil only.
- Sufficient watering is important, especially at the end towards cutting stage.
- Ideal cultivation temperatures is between 17 C° and 25 C° night and day.
- Post-harvest, keep in water buckets after cutting at all times, avoid dry storage.
- Flower supplements are improving flower opening and quality.
- Transport and market the flowers on water for best performance at the end consumer.
- To optimize brand recognition please use Roselily Sleeves or Roselily stickers.



Rose  
Lily®



**VAN DEN BOS**

flowerbulbs

Dijkweg 115 · 2675 AC · Honselersdijk · the Netherlands  
info@vandenbos.com · www.vandenbos.com

**WWW.ROSELILY.COM**